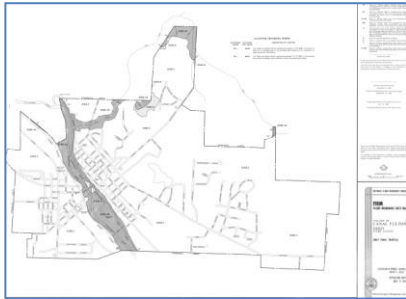


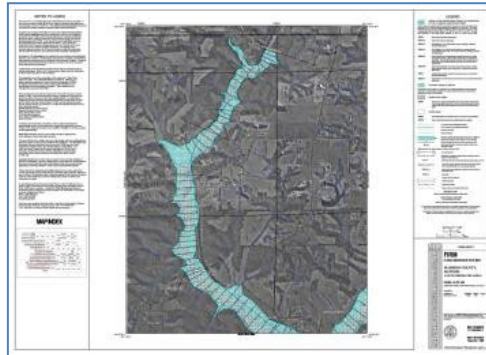
How to Make a FIRMette- 2023 Version

A FIRMette is a legal to-scale copy of a portion of a Flood Insurance Rate Map (FIRM) – a map produced by the Federal Emergency Management Agency (FEMA) which depicts local flood risk. FEMA hosts two webpages, the Map Service Center (MSC) and the National Flood Hazard Layer (NFHL) Viewer, to provide data regarding FIRMs and tools to create FIRMettes. Note that the MSC FIRMette tool will only work for FIRMs not currently in a county wide digital format (Format A). FIRMettes for maps that are digital county-wide (Formats B and C) will now display in the NFHL Format. Note that the FIRMs in Format B can also be accessed using the “Search all products” on the MSC, directions for this process are found on page 6. The NFHL FIRMette can also be accessed through the NFHL site and those directions begin on page 8. Both the NFHL FIRMette and MSC FIRMette are considered legal copies for regulatory purposes.

Format A



Format B



Format C

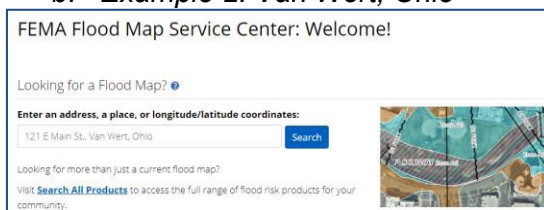


For Format A & Historic ONLY (For Formats B & C skip to page 5)

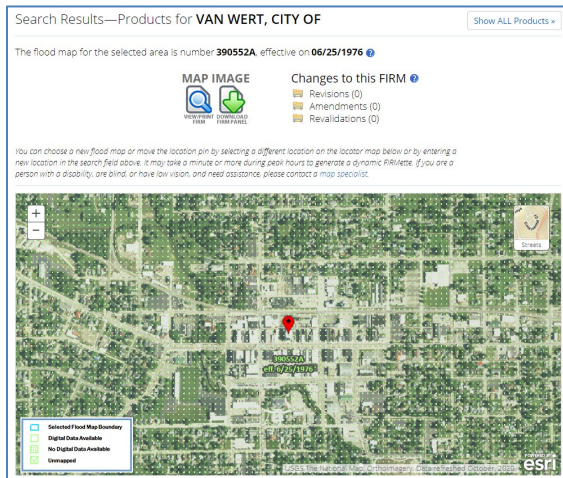
FIRMettes can be printed in letter, legal, and or 11” x 17” sizes. They can be saved as either Adobe PDF files or as image files (TIF).



Find a Current Effective FIRM panel using the Map Based Search:

1. Go to <https://msc.fema.gov/portal/home> .
2. If you already know your map panel number, then click “Search All Products”. Type Panel number into “Product ID” box. Skip to step 6 in the “Make a FIRMette using search all products” section on page 2.
3. For Historic Format A or B maps, use “Make a FIRMette using search all products” on page 2.
4. To search by address, place, or longitude/latitude coordinates, enter terms in the search box
 - a. *Example 1: 121 E Main St., Van Wert, Ohio*
 - b. *Example 2: Van Wert, Ohio*



5. Click Search.
6. A new browser window will open and have your FIRM Panel selected with a map view of the area and marker of the results. Example image below.




7. If the area on the map looks to be correct click on the View/Print FIRM button . Go to page 3, step 6 in the “Make a FIRMette” section.
 - a. **If the panel is not printed the box will say “Not Printed”. If the area says unmapped and it is a corporation check the county maps that surround that area in case the corporation annexed part of the county floodplain.*
8. To move the map to another area, drag the map to the desired location. Then click the desired location. A new location pin  will be placed where you clicked. Repeat step 6.
9. If the map location is drastically off you may modify your search at the top and hit enter to have the map relocate to the new search criteria.

Make a FIRMette (using Search all products) for effective and historical maps (Formats A and B):

1. Go to <https://msc.fema.gov/portal/home> .
2. Click on *Search All Products*.
3. Enter the *State, County and Community* using the pull downs.

FEMA Flood Map Service Center: Search All Products


Choose one of the three search options below and optionally enter a posting date range.

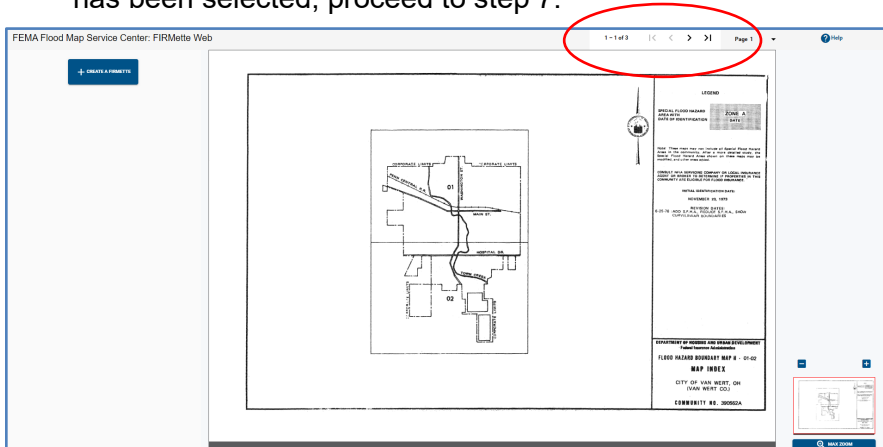
Jurisdiction	Jurisdiction Name	Product ID 
State OHIO	Jurisdiction Name or FEMA ID (Ex. Fairfax County-wide or 51059C)	Product ID (Ex. Panel Number, LOMC Case Number)
County VAN WERT COUNTY		
Community VAN WERT, CITY OF		

4. Click Search 


- Click on *Effective Products*. For historic maps, click on *Historic Products*. Then click on *FIRM Panels*. Then select panel of interest.



- Click on the view button next to the appropriate panel  to look at the appropriate FIRM panel. If you are unsure of the appropriate FIRM panel, use the Index Panel (panels with IND in number) to determine it. In some cases, clicking on the map panel will bring up multiple pages. Other pages may be accessed by scrolling through. Once the correct page has been selected, proceed to step 7.



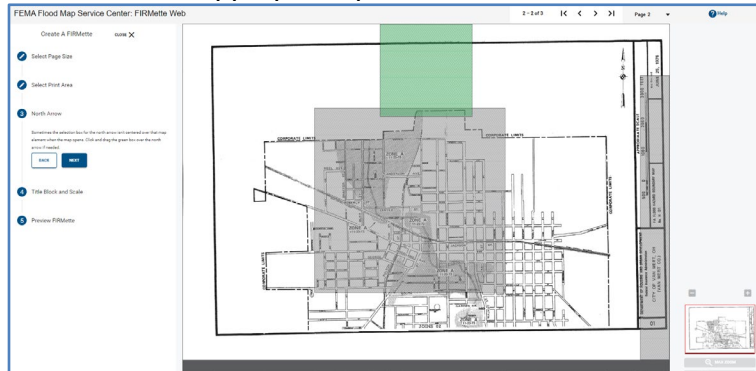
- Click 

- Click on the needed page size  and hit next

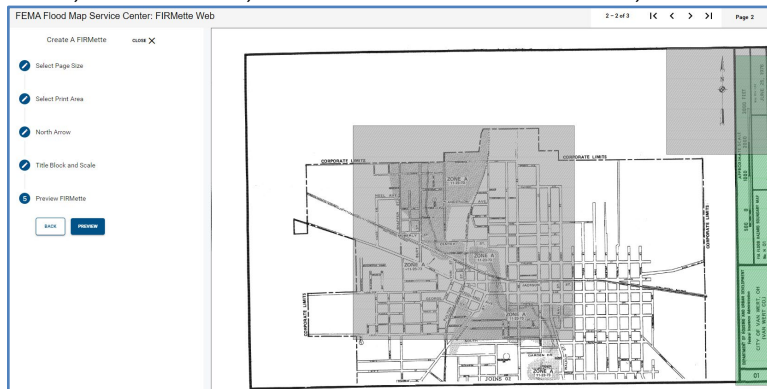
- Click and drag the green square over the area to be printed. The area to be printed will be larger based on the page size chosen. It will still be to scale. Once the green box is in the correct location, hit next.



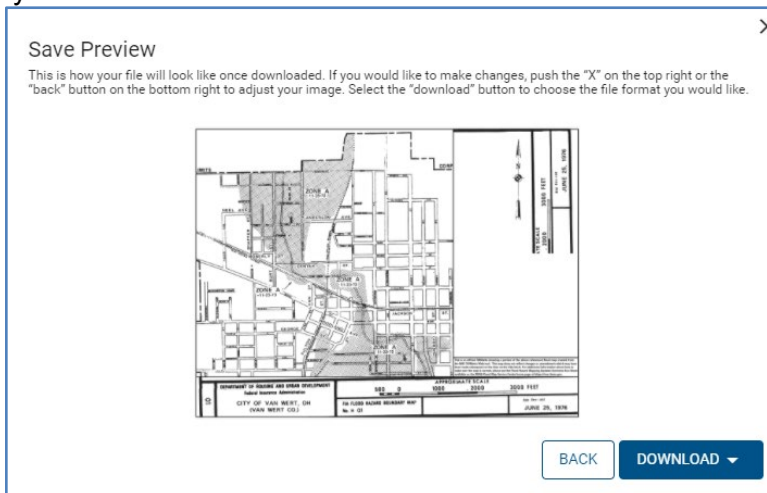
When making a FIRMette, the map scale, north arrow and title block will automatically be placed on the FIRMette. In some cases, with the older maps, the green/gray areas will not line up to the title block or the legend. The tool bar on the left allows these items to be moved by clicking on the desired button (scale bar, north arrow, title block, effective date). The button pressed will turn that section pink and you can move that box to the desired location. The example selected the north arrow box. Continue to move the scale bar, north arrow, title block, and effective date until appropriate placement is reached.



10. Once the print area, North Arrow, Title Block and Scale are set, click [PREVIEW](#).



11. Save Preview will then pop up. With older format maps, the north arrow or title block may not line up perfectly.



12. If you are satisfied with the preview, click download. You will have the option to download as a PDF or a PNG file.

13. The FIRMette can be printed from the PDF or PNG as necessary or saved with your electronic permitting records.

How to Make FIRMette- using the MSC- for most Maps in formats B and C

Please note that some counties may be in multiple formats. As certain panels are updated through the Physical Map Revision (PMR) process, panels are being converted to Format C; however, the unrevised panels will remain in Format B.

Find Current Effective FIRM panel using the Map Based Search (Must use for Format C):


1. Go to <https://msc.fema.gov/portal/home>.
2. If you already know your map panel number, go to “Make a FIRMette using Search All Products” on page 6.
3. In the box enter either an Address or Place.
 - a. Example 1: 400 W Whittier St., Columbus, Ohio 43215
 - b. Example 2: Columbus, Ohio

FEMA Flood Map Service Center: Welcome!

Looking for a Flood Map?

Enter an address, a place, or longitude/latitude coordinates:

Looking for more than just a current flood map?
Visit [Search All Products](#) to access the full range of flood risk products for your community.



4. Click Search.
5. The browser will update to the address of interest. Example image is below.

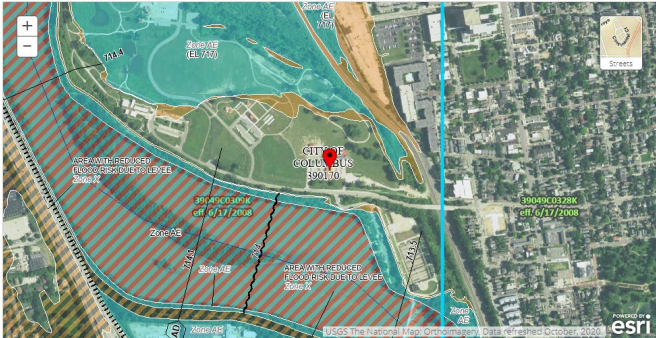
Search Results—Products for **COLUMBUS, CITY OF** Show ALL Products >

The flood map for the selected area is number **39049C0309K**, effective on **06/17/2008**

DYNAMIC MAP 	MAP IMAGE 	Changes to this FIRM
		Revisions (3) Amendments (10) Revalidations (1)

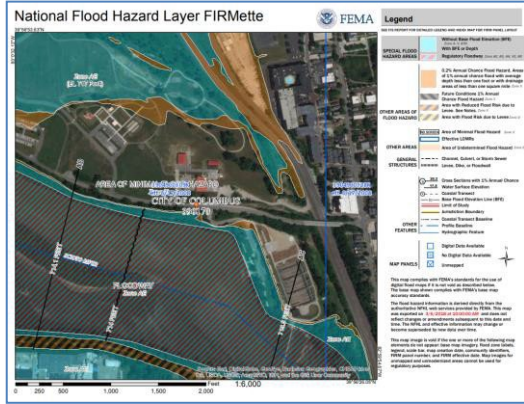
You can choose a new flood map or move the location pin by selecting a different location on the locator map below or by entering a new location in the search field above. It may take a minute or more during peak hours to generate a dynamic FIRMette. If you are a person with a disability, are blind, or have low vision, and need assistance, please contact a map specialist.


Go To NFHL Viewer >



6. If the area on the map looks to be correct click on the Print Map/FIRMette button . If not, proceed to step 7.

a. If the panel is not printed the box will say “Not Printed”.

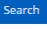


7. To move the map to another area, drag the map to the desired location. Then click the desired location. A new location pin  will be placed where you clicked. Repeat step 6.

8. If the map location is drastically off you may modify your search at the top and hit enter to have the map relocate to the new search criteria.

Make a FIRMette (using Search all products) for effective and historical maps (Format B ONLY):


1. Go to <https://msc.fema.gov/portal/home> .
2. Click on *Search all products*.
3. Enter the *State, County and Community* using the pull downs.

4. Click Search 
5. Click on *Effective Products*. For historic maps, click on *Historic Products*. Then click on FIRM Panels. Then click view next to the panel of interest.

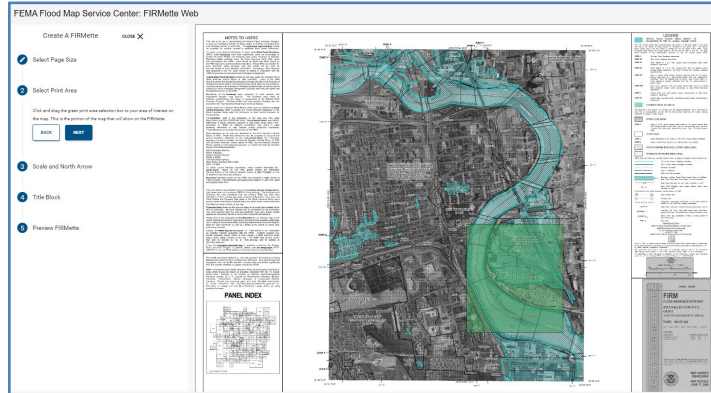
6. If you do not know the panel of interest, click on the view button by one of the index panels. Index panels have IND (such as 39089CIND0B) in the product id number. Repeat until the correct panel is determined. Repeat step 5, navigating to the needed panel.

7. Click 

8. Click 

9. Click on the needed page size  and hit next.

10. Click, hold and drag the green square over the area to be printed. The area to be printed will be larger based on the page size chosen. It will still be to scale.



When making a FIRMette, the map scale, north arrow and title block will automatically be placed on the FIRMette. In some cases, the green areas will not line up to the title block, legend or scale. The tool bar on the left allows these items to be moved by clicking on the desired button (scale bar, north arrow, title block, effective date). The button pressed will turn that section green and you can move that box to the desired location.

14. Once the print area, North Arrow, Title Block and Scale are set, click .



11. If you are satisfied with the preview, click download. You will have the option to download as a PDF or a PNG file.

12. The FIRMette can be printed from the PDF or PNG as necessary or saved with your electronic permitting records.

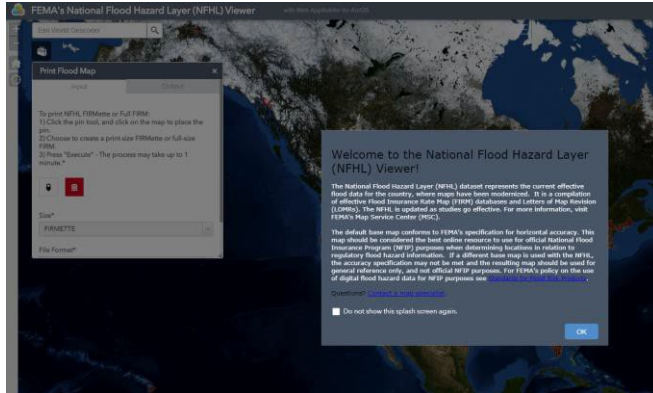
How to Make a NFHL FIRMette- for most Maps in formats B and C

A National Flood Hazard Layer (NFHL) FIRMette is now considered an official (LEGAL) copy of the Paper FIRM. FIRMettes are printed in letter size. They can be saved as either Adobe PDF files or as image files (TIF). Most current effective FIRMS should work using this tool, however, this will not work for maps that have not been modernized (digital format) or historical maps.

Make a FIRMette:

1. Go to <https://hazards->

[fema.maps.arcgis.com/apps/webappviewer/index.html?id=8b0adb51996444d4879338b5529aa9cd](https://hazards-fema.maps.arcgis.com/apps/webappviewer/index.html?id=8b0adb51996444d4879338b5529aa9cd)




1. Read the disclaimer and click OK.

2. Type in an address and click the search button or scroll to the area of interest.

3. A black dot will appear near the address.

4. Please note, sometimes if you zoom too far in, the aerial photography will disappear. If this happens, zoom out. The aerial photography will still appear on the FIRMette.

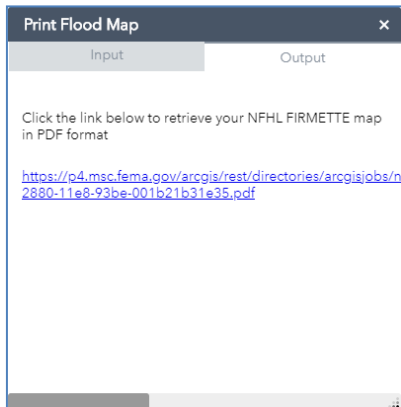
5. In the NFHL Print box, click on the pin tool. 

6. Place the point on the area of interest and a red pin will appear.

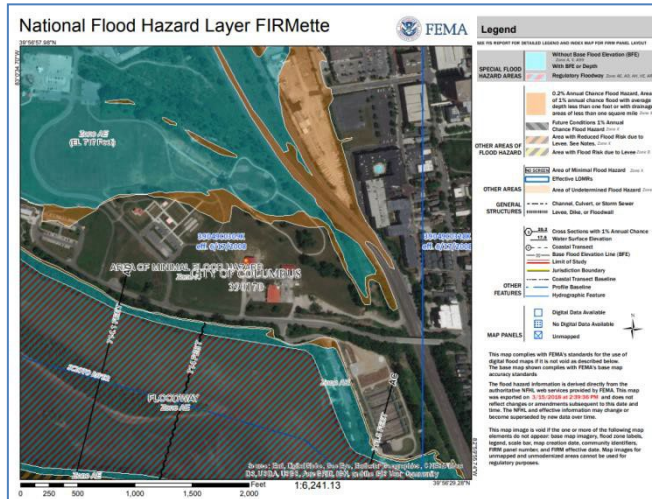


7. Select Size: the FIRMette or the full panel can be selected.

8. Select file format: This is either PDF or PNG.
9. Press Run to receive a regulatory map at 1in = 500ft scale for the selected location. The process may take up to one minute.
10. This box will appear. Click on the link in the box to retrieve the NFHL FIRMette.



6. This is a sample of the NFHL FIRMette.



7. This FIRMette can be saved or printed using the buttons in the upper right hand corner.



For any questions on how to make a FIRMette, please call the Division of Water Resources at 614-265-6750.